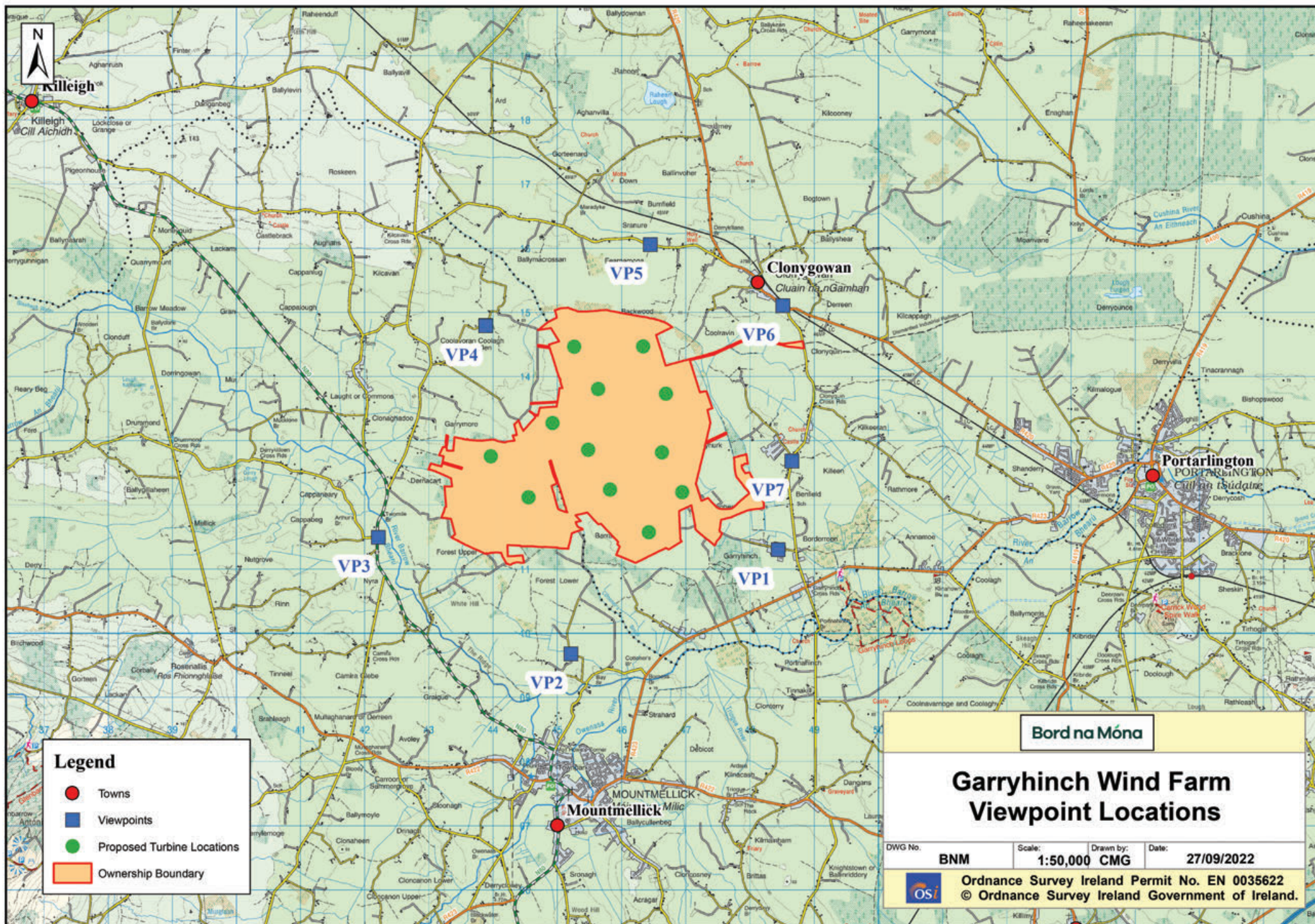


Photomontage Booklet for Proposed Garryhinch Wind Farm

Winter 2022

Bord na Móna





To view a larger copy of the viewpoint map shown here please refer to the A2 double sided map.




Viewpoint 1: View from South-eastern access road on to the bog - approximately 1km east of the proposed development. **VP1** on Viewpoint Location Map.

What is a photomontage?


A typical tool utilised in the assessment of the visual impact of a wind farm is a Photomontage. Photomontages are visualisations that superimpose an image of a proposed development upon a photograph or series of photographs and are used to illustrate the potential impact of a development on the existing landscape.

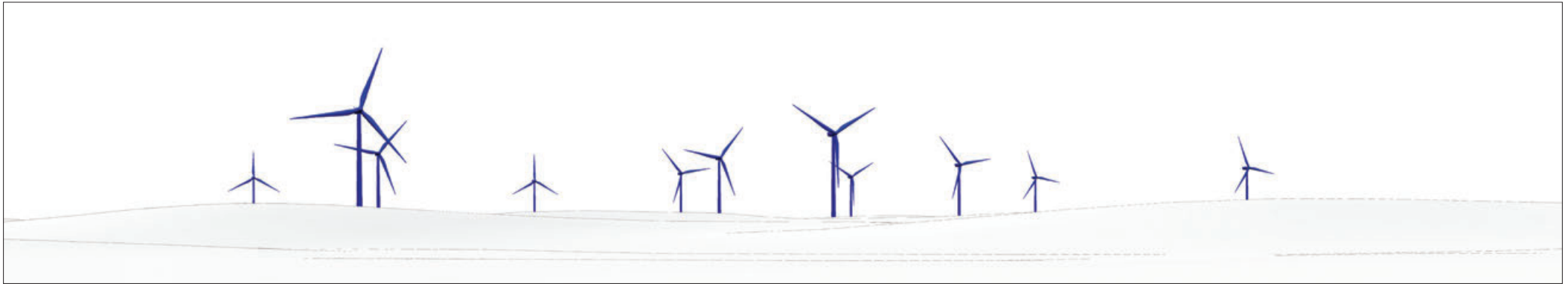
A number of photomontages will accompany the planning application as part of the Landscape and Visual Impact Assessment (LVIA) for the proposed wind farm. Within this booklet you will find samples of the photomontages which will form part of the LVIA for this proposed development.

Legend	
Garryhinch WF Turbines	



Viewpoint 2: View from local road south of the bog - approximately 1.5km from the proposed development. **VP2** on Viewpoint Location map.

Legend	
Garryhinch WF Turbines	




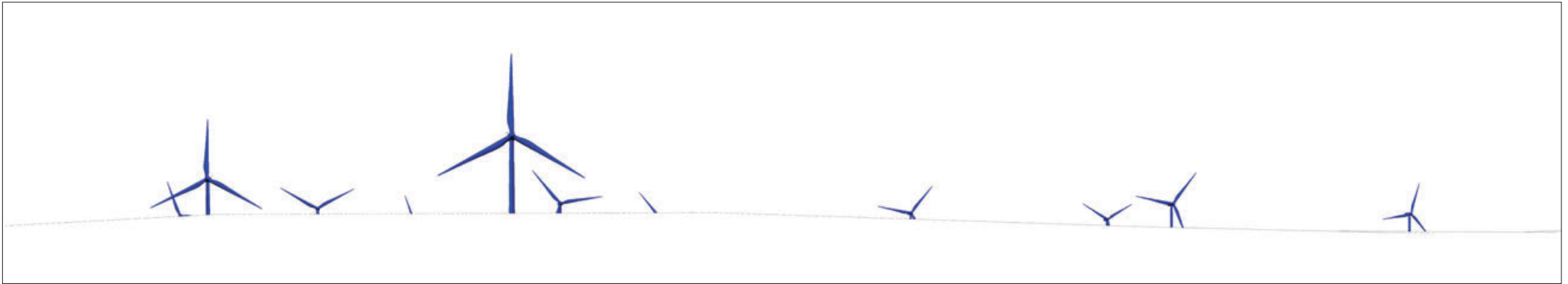
Viewpoint 3: View from the N80 road near the Twomile Bridge, west of Garrymore bog - approximately 1.5km from the proposed development. **VP3** on Viewpoint Location map.

Legend	
Garryhinch WF Turbines	<div></div>




Viewpoint 4: View from local road near Coolayoran, Coolagh and Derrymullen - approximately 1km west of the proposed development. **VP4** on Viewpoint Location map.

Legend	
Garryhinch WF Turbines	



Viewpoint 5: View from Fearnamona on L5026 - approximately 1km north of the proposed development. **VP5** on Viewpoint Location map.

Legend	
Garryhinch WF Turbines	



Viewpoint 6: View from Cloneygowan near the L1015 junction - approximately 1.5km North-east of the development. **VP6** on Viewpoint Location map.



Viewpoint 7: View adjacent to Cloneyhurke Y-junction - approximately 1km east of the proposed development. **VP7** on Viewpoint Location map.